

Metanoia/Bunnyland

by Miriam Kongstad and Johan Bech Jespersen

ARCWAY NIGHTLANDS CONNECTOR Jennifee-See Alternate
Liflandsgade 6, 2300 Copenhagen
www.arcway.dk

soft opening 03.04.2021, 12-18h

04.04-30.04.2021, Saturdays and Sundays 13-18h and by appointment
individual viewings can be scheduled via jennifee.see@gmail.com

Following the industrialisation, modernist architecture with its dedicated use of steel, glass and concrete, became prominent in Europe and America. The first Playboy magazine launched in 1953, and grew into one of the biggest promoters of modernist architecture world wide. In 1937, Walt Disney Animation Studios released its first fully animated feature film, "Snow White and the Seven Dwarfs", pioneering a new form of family entertainment.

While experimenting with cathode rays passing through sheets of glass, Wilhelm Roentgen discovered the X-ray technique in 1895. Yet, Marie Curie is the one who developed both stronger and portable X-ray machines, which not only became groundbreaking in the fight against tuberculosis, but likewise made the technology so widely accessible, that shoe stores started to offer free X-rays for customers. Nearly 100 years after the death of Marie Curie, her body is still radioactive.

Glass facades held together by steel beams, became dominant in ever growing city scapes. And while God died, anti-ornamentation came into fashion, hand in hand with new technological approaches to the body: the desire for transparency and the ultimate truth.

Escaping her glass coffin, Snow White runs into the forest, which instantly transforms itself into an entanglement of razor-sharp tentacles and evil eyes. Bewildered and horrified, she's racing and stumbling while searching for escape, only to arrive at the doorway to the ultimate Playboy pad. Equipped with modern furniture, the pad is elegantly designed to facilitate the choreography of seduction. She is handed a Gin and Tonic, and while the sofa, with a single push, smoothly converts into a bed, the mildly sedated Snow White, now finds herself transitioning from vertical to horizontal position. Ms. Disney has arrived in Bunnyland.

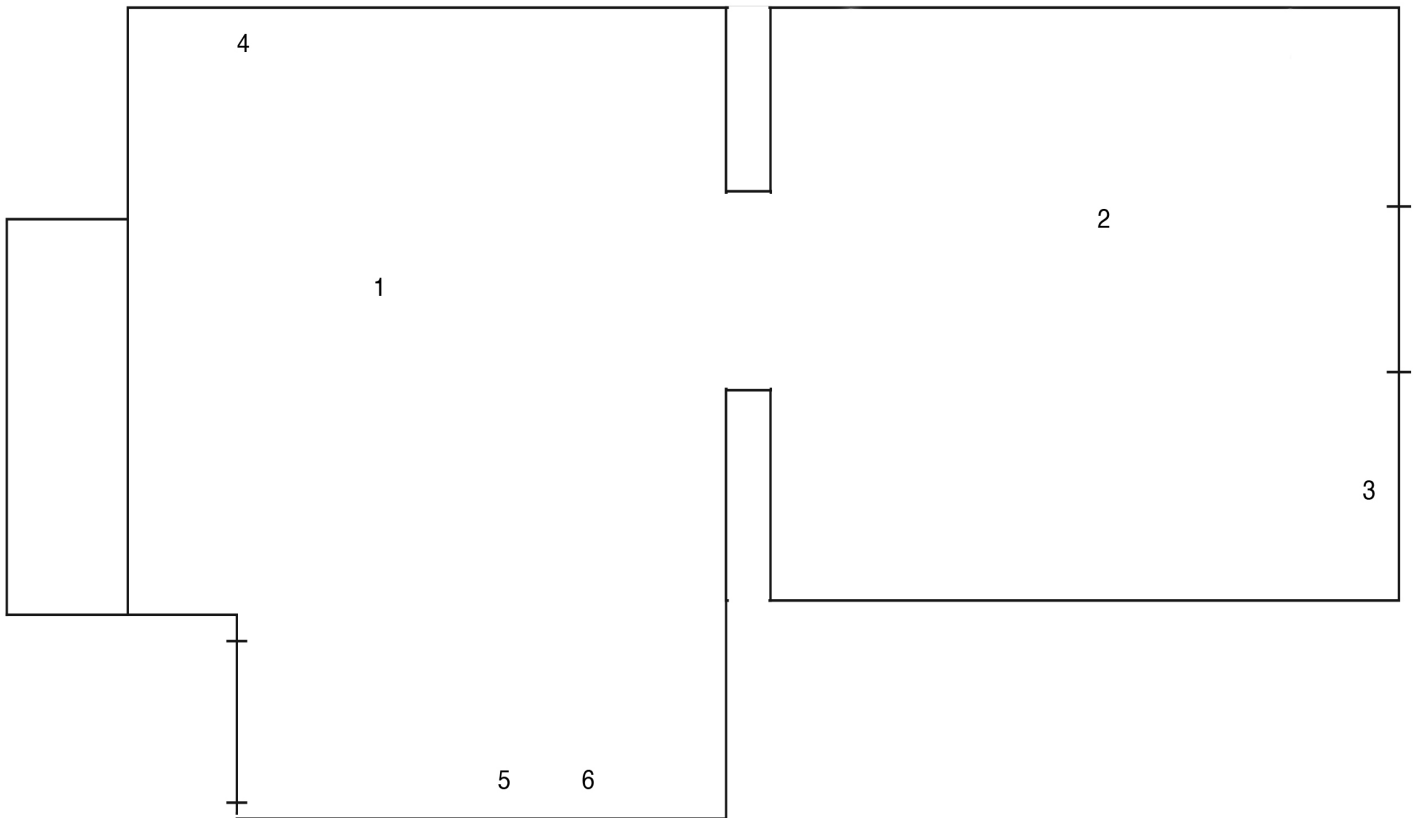
Metanoia/Bunnyland is the first spatial manifestation of a research on sexuality and space, Playboy, Disney and modernist architecture by Johan Bech Jespersen and Miriam Kongstad.

Johan Bech Jespersen (b. 1991) is an artist based in Copenhagen. He has recently completed his BFA from The Royal Academy of Denmark.

Miriam Kongstad (b. 1991) is a choreographer and visual artist, based in Berlin and Copenhagen. She holds an MFA from the Sandberg Institute in Amsterdam, and a BA in choreography from University of the Arts (UDK) in Berlin.
www.miriamkongstad.com

Special thanks to Alexander Holm, Anna Gunvor Hyttel, Chris Shields, Lauryn Youden, Vestsjællands Arbejdende Kunstværksteder and Eks-Skolens Trykkeri.

The exhibition is generously supported by Amager Vest Lokaludvalg.



1
INDEX A
Aarhus Offentlige Slagtehus, 1894
An interior for a playboy, Mario Scheichenbauer, 1979
Cartoon eyes, stock photo
Futuro House, Matti Suuronen, 1968
Glass dress, stock photo
Nosferatu, F.W. Murnau, 1922
Playboy pad, circular bed, 1973
Snow White and The Seven Dwarfs, Walt Disney Productions, 1937
X-ray (breast)
X-ray (jaw)
X-ray (pelvic floor)
X-ray (ribs)

2021
 dimensions variable
 glass, steel, concrete, neon tube, photo transfer, motor oil, key chains

2
INDEX B
A Room Of One's Own, Virginia Woolf, 1929
Chicago Playboy Club, 116 E Walton Street, 1960-1986
Sitting Pretty, Italy: The New Domestic Landscape, MoMA, 1972
Snow White and The Seven Dwarfs, production sketches, 1937
Villa Savoye, Le Corbusier and Pierre Jeanneret, 1931
X-ray (hip joint)
X-ray (lower leg)

2021
 dimensions variable
 glass, steel, concrete, neon tube, photo transfer, motor oil, key chain

3
INDEX C
Archizoom Associati, Mies' lounge chair and illuminated ottoman, 1969
Kneppemaskiner/Frændelos, Lene Adler Petersen and Bjørn Nørgaard, 1970
Playboy pad, 1970s
Wassily Chair, Marcel Breuer, 1925-1926
Snow White and The Seven Dwarfs, Walt Disney Productions, 1937
Snow White and The Seven Dwarfs, production sketches, 1937

2021
 67 x 41 cm
 glass, photo transfer, spray paint, aluminium

4
INDEX D
Cartoon eyes, stock photo
Kathy Acker at a gym, 1984
Married to the Eiffel tower, Agnieszka Piotrowska, 2008
New York City, stock photo
Patrick Bateman's apartment, American Psycho, Mary Harron, 2000
X-ray (pelvic floor)
X-ray (wrist)

2021
 62 x 37 cm
 glass, photo transfer, spray paint, aluminium

5
INDEX E
Le Fievre D'Urbicande, Benoît Peeters and Francois Schuiten, 1987
Playboy's Progress (Playboy's penthouse), Playboy Magazine, May 1954
The Eizo X-Ray Pin-Up Calendar, BUTTER, 2010
The Modulor scale, Le Corbusier, 1948
X-ray (spine)

2021
 107 x 35 cm
 glass, photo transfer, spray paint, aluminium

6
INDEX F
Sitting Pretty, Italy: The New Domestic Landscape, MoMA, 1972
Snow White and The Seven Dwarfs, Walt Disney Productions, 1937
The Eizo X-Ray Pin-Up Calendar, BUTTER, 2010
X-ray (lower body)

2021
 107 x 40 cm
 glass, photo transfer, spray paint, aluminium